

Data Logger for Agilent Handheld LCR Meter

Quick Start Guide



Agilent Technologies

Notices

© Agilent Technologies, Inc. 2008-2009

No part of this manual may be reproduced in any form or by any means (including electronic storage and retrieval or translation into a foreign language) without prior agreement and written consent from Agilent Technologies, Inc. as governed by United States and international copyright laws.

Manual Part Number

U1731-90036

Edition

Third Edition, December 1, 2009

Printed in Malaysia

Agilent Technologies, Inc.
5301 Stevens Creek Blvd.
Santa Clara, CA 95052 USA

Warranty

The material contained in this document is provided “as is,” and is subject to being changed, without notice, in future editions. Further, to the maximum extent permitted by applicable law, Agilent disclaims all warranties, either express or implied, with regard to this manual and any information contained herein, including but not limited to the implied warranties of merchantability and fitness for a particular purpose. Agilent shall not be liable for errors or for incidental or consequential damages in connection with the furnishing, use, or performance of this document or of any information contained herein. Should Agilent and the user have a separate written agreement with warranty terms covering the material in this document that conflict with these terms, the warranty terms in the separate agreement shall control.

Technology Licenses

The hardware and/or software described in this document are furnished under a license and may be used or copied only in accordance with the terms of such license.

Restricted Rights Legend

U.S. Government Restricted Rights. Software and technical data rights granted to the federal government include only those rights customarily provided to end user customers. Agilent provides this customary commercial license in Software and technical data pursuant to FAR 12.211 (Technical Data) and 12.212 (Computer Software) and, for the Department of Defense, DFARS 252.227-7015 (Technical Data - Commercial Items) and DFARS 227.7202-3 (Rights in Commercial Computer Software or Computer Software Documentation).

Safety Notices

CAUTION

A **CAUTION** notice denotes a hazard. It calls attention to an operating procedure, practice, or the like that, if not correctly performed or adhered to, could result in damage to the product or loss of important data. Do not proceed beyond a **CAUTION** notice until the indicated conditions are fully understood and met.

WARNING

A **WARNING** notice denotes a hazard. It calls attention to an operating procedure, practice, or the like that, if not correctly performed or adhered to, could result in personal injury or death. Do not proceed beyond a **WARNING** notice until the indicated conditions are fully understood and met.

Contents

- Introduction 1
- System Requirements 2
- Agilent License Terms 3
- A. Hardware and Data Logger Software Installation 6
 - Hardware Installation 6
 - Data Logger Software Installation 7
- B. Equipment Setup and Connection 8
- C. Using the Data Logger 9
 - Automatic - Continuous Mode 10
 - Automatic - Up To x Count Mode 11
 - Manual Mode 12
- D. Removing the Data Logger 13
 - Uninstalling from the Windows Start menu 13
 - Uninstalling from the Windows Add/Remove Programs 14

Contents

Introduction

The Agilent U1731A/U1732A/U1731B/U1732B Dual Display Handheld LCR Meter has a bi-directional (full duplex) communication capability that enables data transfer from the meter to a PC. The required accessory for this communication capability is an optional IR-USB cable, to be used with an application software that is downloadable from the Agilent Web site.

The Data Logger for Agilent Handheld LCR Meter is an application software that is targeted to extend the capabilities of the U1731A/U1732A/U1731B/U1732B Dual Display Handheld LCR Meter. The software provides a simple graphical user interface (GUI) that allows you to perform basic controls and measurements through the PC. The installation of this application software will not affect the electronic characteristics, specifications, functions, and operations of the instrument.

For instrument set up and operation, please refer to the *Agilent U1731A/U1732A Dual Display Handheld LCR Meter User's and Service Guide*, U1731-90035 or *Agilent U1731B/U1732B Dual Display Handheld LCR Meter User's and Service Guide*, U1731-90059.

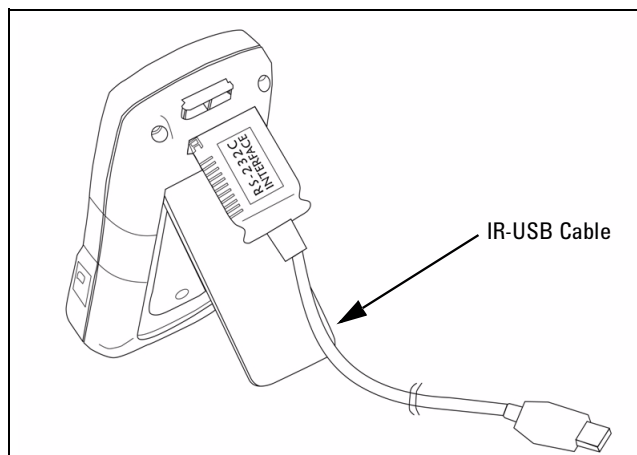


Figure 1 Cable connection for remote communication

NOTE

The IR-USB cable functions as a serial RS-232 that connects the instrument to the USB port of the computer.

System Requirements

Hardware Requirements

Instrument Requirements:

- U1731A/U1732A/U1731B/U1732B Dual Display Handheld LCR Meter
- IR-USB Cable†

PC Requirements

For best performance, ensure that your PC meets the following minimum requirements:

PC Requirements	Specification (Minimum)
Processor	Pentium® 1 GHz 32-bit (x86) processor or better
Operating System	Microsoft® Windows 2000/XP Service Pack 3
Available RAM	512 MB minimum (1 GB recommended)
Hard Disk Space	1 GB minimum (2 GB recommended)

Software Requirements

Software Requirements	Version (Minimum)
Prerequisites	Microsoft .NET Framework 3.5* Agilent VEE Pro 9.0 Runtime* PL-2303 USB-Serial Driver*

* Bundled with Data Logger for Agilent Handheld LCR Meter installer.

† The IR-USB cable and the USB-Serial cable are used interchangeably throughout this document. Both terms are referring to the same item.

Agilent License Terms

The following License Terms govern your use of the Licensed Materials unless you have a separate written agreement with Agilent, in which case, that written agreement will control and take precedence.

License Grant. Agilent grants you a non-exclusive license to use one copy of the Licensed Materials. With respect to the software portion of the Licensed Materials, “use” means to install, store, display, execute and use the software on the computer or device, or on the class or series of equipment, for which you have paid the corresponding license fee. If no fee is required, you may use the software on one computer or device. If the software is licensed for concurrent or network use, you may not allow more than the maximum number of authorized users to access and use the software concurrently.

License Restrictions. You may make copies or adaptations of the Licensed Materials only for archival purposes or only when copying or adaptation is an essential step in the authorized use of the Licensed Materials. You must reproduce all copyright notices in the original Licensed Materials on all permitted copies or adaptations. Except as provided here, you may not copy, modify or translate the Licensed Materials or disable any of its features. You may not copy the Licensed Materials onto any public or distributed network or service bureau. In addition, you may not lease, rent or sublicense the Licensed Materials without Agilent's prior written consent.

Upgrades. This license does not entitle you to receive upgrades, updates or technical support. Such services may be purchased separately. If the Licensed Materials include an upgrade to previously licensed material, your license in that material automatically terminates and you should destroy the previous content and any copies or adaptations.

Ownership. The Licensed Materials are owned and copyrighted by Agilent or its third party suppliers. Your license confers no title to, or ownership in, the Licensed Materials and is not a sale of any rights in the Licensed Materials. Agilent's third party suppliers may protect their rights in the event of any violation of these License Terms.

No Disassembly. You may not disassemble or decompile the Licensed Materials unless you obtain Agilent's prior written consent. In some jurisdictions, Agilent's consent may not be required for limited disassembly or decompilation. Upon request, you will provide Agilent with reasonably detailed information regarding any such permitted disassembly or decompilation.

High Risk Activities. The Licensed Materials are not specifically designed, manufactured or intended for use in the planning, construction, maintenance or direct operation of a nuclear facility, nor for use in on-line control or fail safe operation of aircraft navigation, control or communication systems, weapon systems or direct life support systems.

Transfer. You may transfer the license granted to you here provided that you deliver all the Licensed Materials to the transferee along with these License Terms. The transferee must accept these License Terms as a condition to any transfer. Your license to use the Licensed Materials will terminate upon transfer.

Termination. Agilent may terminate your license upon notice for failure to comply with any of these License Terms. Upon termination, you must immediately destroy the Licensed Materials, together with all copies, adaptations and merged portions in any form.

Export Requirements. The Licensed Materials may be subject to export control laws, including the U.S. Export Administration Regulations and other export laws and regulations of other countries. You may not export or re-export the Licensed Materials or any copy or adaptation in violation of any applicable laws or regulations. You certify that you are not on the U.S. Department of Commerce's Denied Persons List, the U.S. Department of Treasury's Specially Designated Nationals list or other government list prohibiting you from receiving the Licensed Materials.

U.S. Government Restricted Rights. If the Licensed Materials are licensed for use in the performance of a U.S. Government prime contract or subcontract, you agree that they have been developed entirely at private expense. You further agree that they are licensed as “commercial computer software” as defined in DFARS 252.227 7014 (June 1995), as a “commercial item” as defined in FAR 2.101(a), or as “Restricted computer software” as defined in FAR 52.227 19 (June 1987) (or any equivalent agency regulation or contract clause), whichever is applicable. You agree that you acquire only those rights provided for such Licensed Materials by the applicable FAR or DFARS clause or the Agilent standard license agreement for the product involved. Contractor/Manufacturer is Agilent Technologies, Inc., 5301 Stevens Creek Blvd, Santa Clara, CA 95051 USA.

A. Hardware and Data Logger Software Installation

Hardware Installation

NOTE

Make sure you have downloaded the Data Logger for Agilent Handheld LCR Meter application software from the Agilent Web site and install it to your PC before connecting the IR-USB cable to your PC. The IR-USB cable driver will be installed automatically as a pre-requisites prior to install the application software.

- 1 Connect the USB connector of the IR-USB cable to an available USB port on your PC and the other end of the cable with the text side facing upwards to the instrument.
- 2 Your PC will automatically detect the USB cable.

Data Logger Software Installation

You may obtain the application software from Agilent's web site to install the Data Logger for Agilent Handheld LCR Meter.

NOTE

Prior to installing the Data Logger, ensure that your PC meets the minimum system requirements for installation and operation processes.

Downloading the application software from the Web

- 1 Go to <http://www.agilent.com/find/handheldlcr>, and download the Data Logger for Handheld LCR Meter application software.
- 2 Save the file to any location on your hard disk.
- 3 Disconnect any instrument that is connected to your PC and close all other applications on your PC.
- 4 Double-click the saved installation file to begin installation.
- 5 If you do not have any of the prerequisites installed, the InstallShield Wizard software prerequisite will appear.
- 6 Click **OK** to begin the installation of the listed missing prerequisites.
- 7 Once the above installation has completed, installation of the Data Logger will proceed as normal.
- 8 Follow the instructions on your screen to begin the installation.
- 9 Click **Finish** once the installation has completed.
- 10 A shortcut to this software will be created on your desktop.



Figure A-1 Shortcut to the Data Logger

B. Equipment Setup and Connection

Connect the U1731A/U1732A/U1731B/U1732B Dual Display Handheld LCR Meter to a PC for instrument control:

- 1 Set up the communication parameters of the LCR Meter and the PC you are using. The default values for baud rate, parity, data bit, and stop bit in the LCR Meter are 9600, n, 6, and 1 respectively.
- 2 Ensure that the USB driver and the IR-USB transfer software has been installed on your PC.
- 3 Attach the optic side of the cable to the communication port on the meter. Ensure that the text side is facing upwards.
- 4 Plug the USB cable terminal end into the USB port of your PC.
- 5 Turn on the meter. Press the **REMOTE** key and ensure the **RS232** is shown on the meter's LCD display.
- 6 Use the data transfer software to retrieve the data that you need.

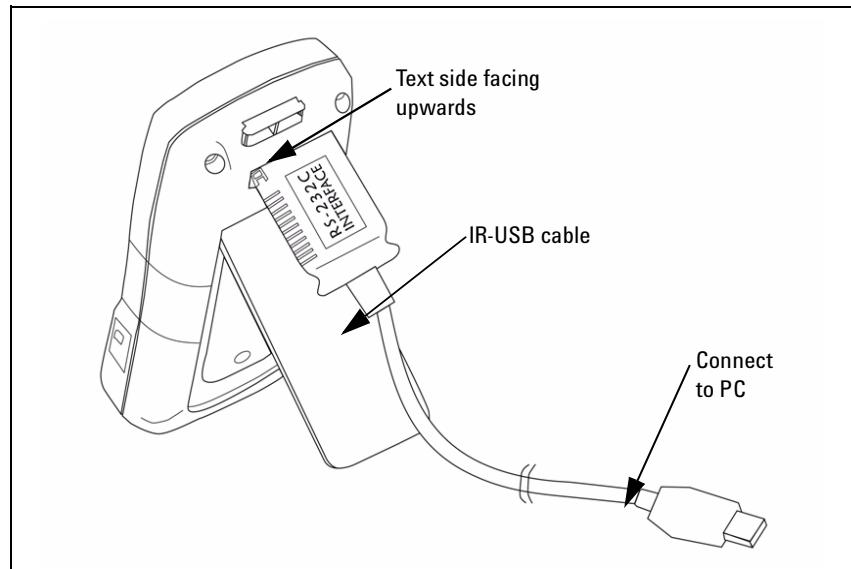


Figure B-1 Hardware Connection Setup

C. Using the Data Logger

The Data Logger software is a simple graphical user interface (GUI) that allows you to perform basic controls and measurements through the PC. The Data Logger allows data to be transferred from the meter to the PC via the IR-USB cable with data storing option. Three types of logging mode are available in the Data Logger software:

- Automatic -Continuous
- Automatic -Up to x count
- Manual

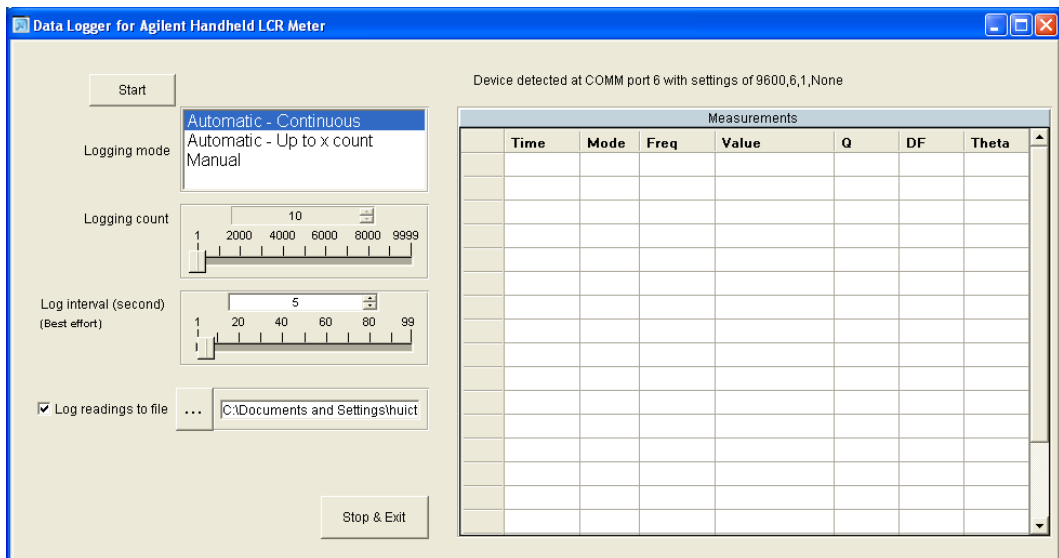


Figure C-1 Data Logger Window

NOTE

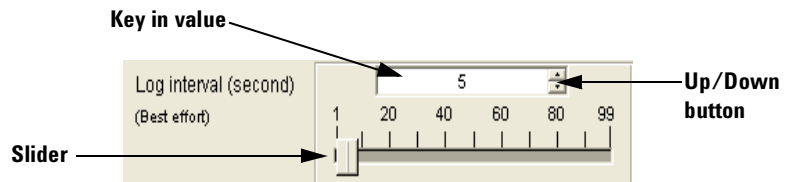
When the logging interval is set to 4 s or below, running the Data Logger for extended duration will produce discrepancy in the number of theoretically logged data and actual logged data. The timing inaccuracy is caused by the application loading of a PC and the time stamp that is shown by the Data Logger is based on the PC's time; at the instance the data is retrieved from the meter and after it is processed and displayed.

Automatic - Continuous Mode

The Automatic-Continuous mode allows the data to be transferred to the PC automatically and continuously with a specific log interval.

Procedures:

- 1 Click to select Automatic-Continuous in the logging mode list on the Data Logger window.
- 2 In this mode, the logging count option is disabled and you can only set the desired log interval in seconds by clicking on the up/down button, click and drag the slider or key in the required value as shown below.



- 3 Uncheck the Log readings to file option if you do not wish to store data in the PC. The Log readings to file option is enabled by default. The data will be saved as a .csv file.
- 4 Click to save the data a different location. A Log file name: dialog box will appear. Enter the file name in the File name text box. Choose the desired folder in the Save in: drop-down list.
- 5 Click **Save** and your data will be saved as a CSV file with the specified file name and in the respective location.
- 6 Click on **Start** button to start your data logging. The data will be displayed on the Measurements table.
- 7 Click on **Stop & Exit** to stop data logging and exit the Data Logger window.

NOTE

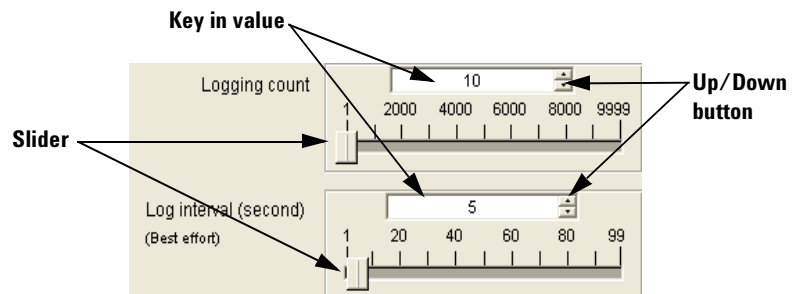
To start a new data logging, you need to stop and exit from the Data Logger window.

Automatic - Up To x Count Mode

The Automatic-Up to x count mode allows the data to be transferred to the PC at a specific logging count and log interval set by you.

Procedures:

- 1 Click to select Automatic-Up to x count in the logging mode list on the Data Logger window.
- 2 Set the desired logging count and log interval in seconds by clicking on the up/down button, click and drag the slider or key in the required value as shown below.



- 3 Uncheck the Log readings to file option if you do not wish to store data in the PC. The Log readings to file option is enabled by default. The data will be saved as a .csv file.
- 4 Click to save the data a different location. A Log file name: dialog box will appear. Enter the file name in the File name text box. Choose the desired folder in the Save in: drop-down list.
- 5 Click **Save** and your data will be saved as a CSV file with the specified file name and in the respective location.
- 6 Click on **Start** button to start your data logging. The data will be displayed on the Measurements table.
- 7 Click on **Stop & Exit** to stop data logging and exit the Data Logger window.


NOTE

To start a new data logging, you need to stop and exit from the Data Logger window.

Manual Mode

The Manual mode allows the data to be transferred to the PC manually.

Procedures:

- 1 Click to select Manual in the logging mode list on the Data Logger window. In this mode, the logging count option and log interval option is disabled.
- 2 Uncheck the Log readings to file option if you do not wish to store data in the PC. The Log readings to file option is enabled by default. The data will be saved as a .csv file.
- 3 Click  to save the data a different location. A Log file name: dialog box will appear. Enter the file name in the File name text box. Choose the desired folder in the Save in: drop-down list.
- 4 Click **Save** and your data will be saved as a CSV file with the specified file name and in the respective location.
- 5 Click on **Start** button to start your data logging.
- 6 Click on **Press to log** button to log one data at a time. The data will be displayed on the Measurements table.
- 7 Click on **Stop & Exit** to stop data logging and exit the Data Logger window.

NOTE

To start a new data logging, you need to stop and exit from the Data Logger window.

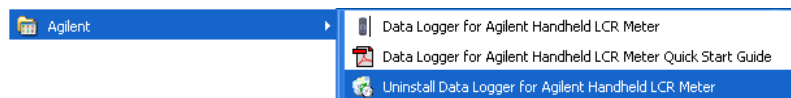
D. Removing the Data Logger

The software can be removed either from the Windows Start menu or by the Windows Add/Remove Programs.

Uninstalling from the Windows Start menu

To remove the software from the Windows Start menu, proceed as follows:

- 1 Select **Start** (Windows taskbar) > **All Programs** > **Agilent** > **Uninstall Data Logger for Handheld LCR Meter**.

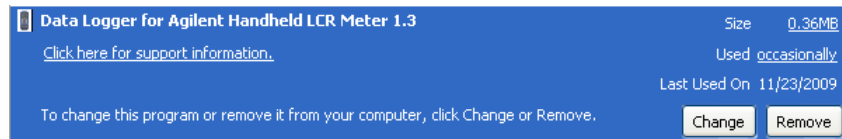


- 2 The Windows Installer dialog box will appear and prompt you to confirm the complete removal of the application.
- 3 Click Yes to proceed. To cancel the uninstallation, click No.
- 4 Follow the instructions on the screen to complete the removal process.

Uninstalling from the Windows Add/Remove Programs

To remove the software by the Windows Add/Remove Programs, proceed as follows:

- 1 Select **Start** (Windows taskbar) > **Control Panel** to open the Control Panel window.
- 2 Double-click **Add or Remove Programs**. The Add or Remove Programs window will appear containing a list of currently installed programs.
- 3 Browse the list of currently installed programs to search for the **Data Logger for Agilent Handheld LCR Meter 1.3** as shown below.



- 4 Click **Remove** to uninstall the selected application.
- 5 The Add or Remove Programs dialog box will appear and prompt you to confirm the complete removal of the application. Click **Yes** to proceed. To cancel the uninstallation, click **No**.
- 6 Follow the instructions on the screen to complete the removal process.

www.agilent.com

Contact us

To obtain service, warranty or technical support assistance, contact us at the following phone numbers:

United States:

(tel) 800 829 4444 (fax) 800 829 4433

Canada:

(tel) 877 894 4414 (fax) 800 746 4866

China:

(tel) 800 810 0189 (fax) 800 820 2816

Europe:

(tel) 31 20 547 2111

Japan:

(tel) (81) 426 56 7832 (fax) (81) 426 56 7840

Korea:

(tel) (080) 769 0800 (fax) (080) 769 0900

Latin America:

(tel) (305) 269 7500

Taiwan:

(tel) 0800 047 866 (fax) 0800 286 331

Other Asia Pacific Countries:

(tel) (65) 6375 8100 (fax) (65) 6755 0042

Or visit Agilent worldwide web at:

www.agilent.com/find/assist

Product specifications and descriptions in this document subject to change without notice. Always refer to Agilent web site for the latest revision.

© Agilent Technologies, Inc. 2008-2009

Printed in Malaysia

Third Edition, December 1, 2009

U1731-90036



Agilent Technologies